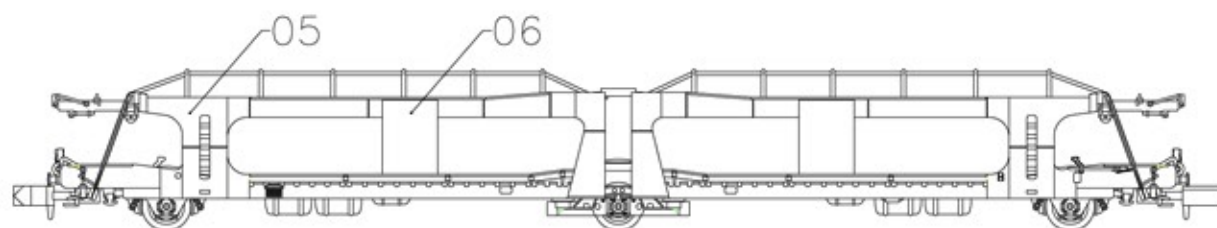
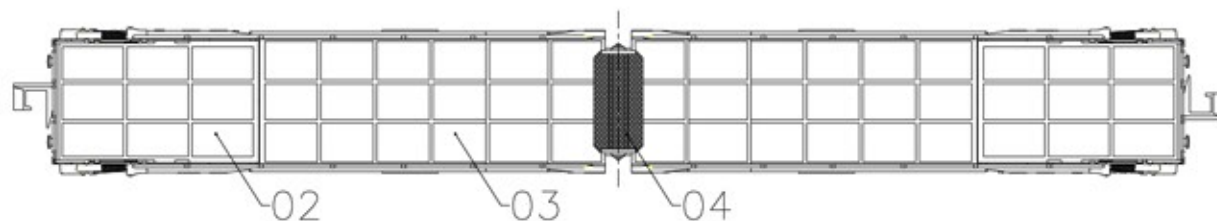
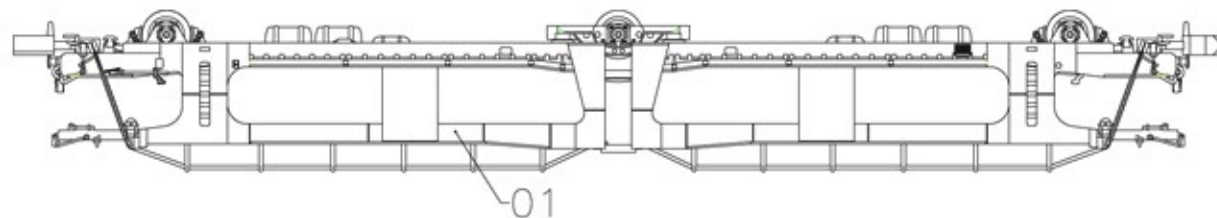
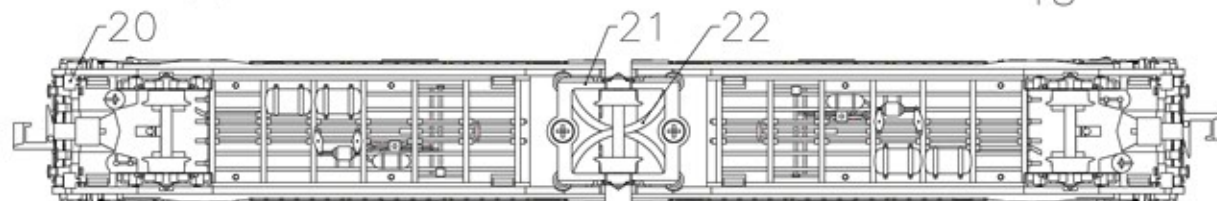
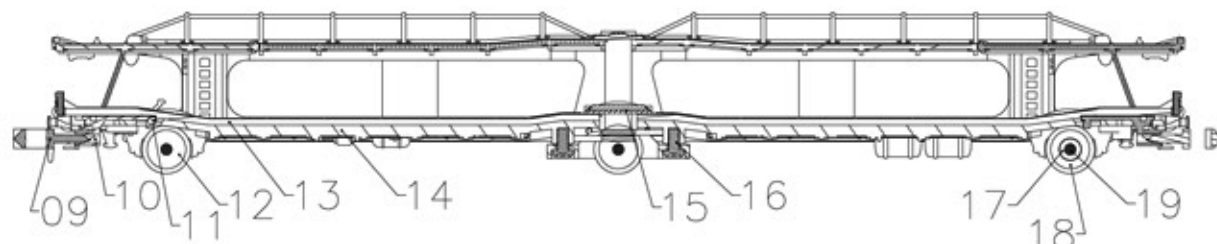
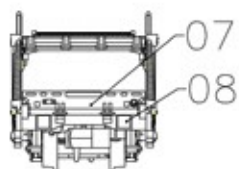


Nº	Descripción / Description	Unds.
1	Lateral Drch. / Right Body Plate	2
2	Rampa piso superior / Top floor	2
3	Piso superior / Top floor	2
4	Placa intermedia superior / Top middle plate	1
5	Lateral Izq. / Left body	2
6	Placa lateral / Print plate	4
7	Placa testero inferior / End plate	2
8	Topes / Buffer	4
9	Enganche / Coupler	2
10	Caja enganche / Coupler box	2
11	Muelle Enganche / Coupler Spring	2
12	Rueda sin aislante / Wheel-1	3
13	Piso inferior / Bottom floor	2
14	Chasis / Chassis	2
15	Placa intermedia inferior / Bottom middle plate	1
16	Tornillo Bogie / Screw for Bogie	2
17	Aislante rueda / Axes Bush	3
18	Eje rueda/ Wheel axle	3
19	Rueda con aislante / Wheel-2	3
20	Peldaño / Step	4
21	Bogie intermedio / Middle Bogie	1
22	Tijeras conexión intermedia / Middle connect	2



PortaCoches doble piso N33201 - SEMAT

By MFTrain



MF TRAIN[®]
Modelismo Ferroviario